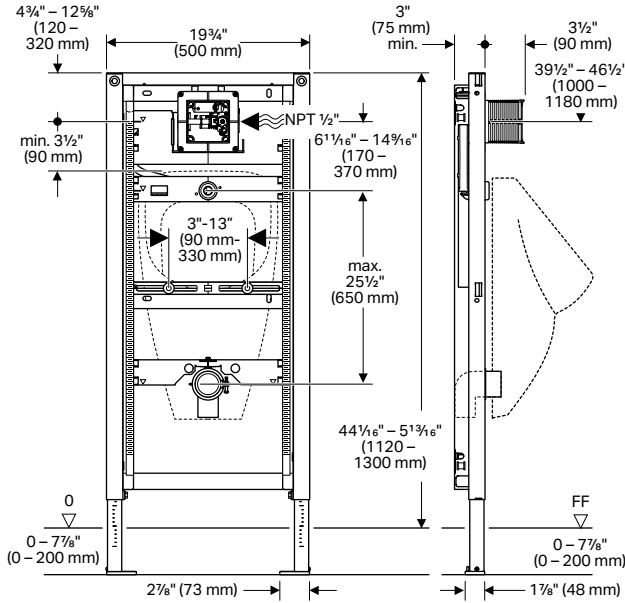


Geberit Installation Systems


Systems for Wall-Hung Urinals

Geberit Duofix Carrier

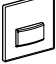
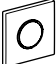
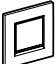
Model No.	Description	List Price
111.625.00.1	Carrier frame with rough-in box	\$557.00



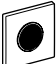
- NOTES:
- Carrier for 2-hole "Euro" style wall-hung urinal fixtures only
 - ASSE 1001 Certified Atmospheric Vacuum Breaker included.
 - Refer to geberit.us for latest list of code-approved compatible urinal fixtures

Products marked with  comply with the American Disabilities Act (ADA) when installed per the requirements of the latest ADA Accessibility Guidelines (ADAAG) and/or ICC/ANSI A117.1.


Actuators


Style	Material	Finish	Model No.	List Price
Type 50 	Die Cast	Customer supplied inlay	116.016.00.5	\$543.00
		Alpine White	116.016.11.5	543.00
		Black	116.016.DW.5	543.00
		Brushed Chrome	116.016.GH.5	751.00
	Glass	Umber	116.016.SQ.5	632.00
<i>NEW! Available April 1, 2016.</i>				
Type 10 	Metal	Br SS	116.015.SN.1	370.00
Type 30 	Plastic	Polished Chr-Matte	116.017.KH.1	370.00
		Chr-Polished Chr***	116.017.KJ.1	370.00
<i>NEW! Available April 1, 2016.</i>				

Hands Free Actuators


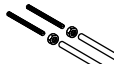
Type 10 	Metal	Br SS (Battery/DC Power)	116.035.SN.1	\$858.00
		Br SS (AC Power – CLASS 2 power supply transformer included)	116.025.SN.1	858.00

Urinal Connection Sets and Accessories

Description	Model No.	List Price
 PE syphon trap with horizontal outlet and seal; Ø1.96" (Ø50 mm) outlet	152.950.11.1	\$35.00

 PE syphon trap with vertical outlet and seal; Ø1.97" (Ø50 mm) outlet	152.951.11.1	35.00
--	--------------	-------

Required Accessories for 3.50"-7.00" (9-18 cm) Finished Wall Thickness

 Mud guard protection housing and extension set for urinal carrier	241.930.00.1	\$19.00
 Mounting rod M8 x 10" long. Not supplied.		—

Optional Accessories

Mounting Accessories for Geberit Duofix Carrier Frames

Frame to wall anchoring for 5.125"-7.875" (13-20 cm) thick unfinished pre-wall	111.815.00.1	\$34.00
Frame to wall anchoring for 5.125"-7.875" (13-20 cm) thick unfinished pre-wall corner installations	111.835.00.1	34.00
Frame to wall anchoring where foot installations into floor are not allowed for 5.125"-7.875" (13-20 cm) thick unfinished pre-wall	111.867.00.1	65.00
Frame to stud fastening set for extended stud spacing from 19.75"-25.56" (50-65 cm)	111.869.00.1	34.00
Frame to wall anchoring extensions for 7.875"-15.75" (20-40 cm) thick unfinished pre-wall	111.887.00.1	14.00

Replacement Parts for Geberit Duofix Carrier 111.625.00.1

Item	Model No.	Description	List Price	Item	Model No.	Description	List Price
1	242.039.00.1	Crossbar for water supply	\$70.00	7	853.614.92.1	Protection plug	\$5.00
1.1	362.790.00.1	Round cord ring, EPDM	2.00	8	240.315.00.1	Waste fitting outlet bend, PE; 1 x 90° bend with Ø2.48"/Ø1.97" (Ø63/Ø50 mm)	24.00
2	152.489.16.1	Supply inlet tube with seal, PE; with Ø1.34" (Ø35 mm) supply inlet	27.00	8.1	152.693.00.1	Seal for connector, EPDM; for Ø1.97" (Ø50 mm) outlet	3.00
2.1	119.669.00.1	Sleeve, EPDM	3.00	9	242.516.00.1	Outlet pipe Ø1.97" (Ø50 mm) Terrain article no. 225.2G	24.00
3	242.045.00.1	Fixing, with plastic nuts, complete	14.00	10	111.892.00.1	Frame mounting screws for steel stud construction, galvanized, self-tapping	6.00
3.1	242.046.00.1	Plastic union nuts for crossbar for fixing	11.00	11	241.930.00.1	Mud guard protection housing and extension set for urinal carrier	19.00
4	240.027.46.1	Cover caps, plastic, Matte Chrome	6.00	12	242.131.00.1	Elbow, 90° (not shown)	60.00
5	242.047.00.1	Outlet cross member	27.00				
6	156.050.00.1	Syphonic trap with horizontal outlet and seal, PE; with Ø1.97" (Ø50 mm) outlet	18.00				

